



event info
career fair
event agenda

illinois arborist association

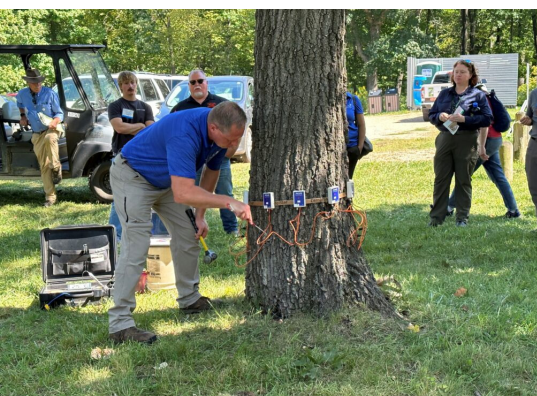
ARBORICULTURE CAREERS

demonstration event



October 17th & 18th

The Morton Arboretum | Gateway to **Tree** Science



Demonstrations | Professional Networking
Exploration of Career Opportunities



THE
CHAMPION
of TREES

Thursday | October 17th

The Morton Arboretum | Gateway to Tree Science

Arrival & Registration

10:00a Check In
11:00a Lunch (Provided!)

illinois arborist association

**ARBORICULTURE
CAREERS**
demonstration event



Demonstration Events

Location: Gateway to Tree Science, The Morton Arboretum

- 12:00p** Welcome | Paul Filary, The Morton Arboretum Representative, & Event Sponsors
- 12:30p** **Drone Use in Arboriculture** | Greg Butler, *Davey Resource Group*
Agricultural spray drones are a relatively new piece of technology in the native landscape restoration industry. This presentation will provide an overview of what the drone is, how it's used, and some of the benefits and challenges of this new technology. I will also discuss at least one project the drone has been involved in and show before and after photos.
- 1:30p** **Rigging Basics** | Phil Prohaska, *Cook County Forest Preserve & The Arborist Staff*, *The Morton Arboretum*
When a tree or some of its parts need to be removed, we are presented with a unique puzzle to solve. Each tree is different, and we need a way to perform the work safely and efficiently. Often, due to difficult access, we must devise a way to solve this puzzle by climbing the very tree we are removing and utilizing its own structure to aid in the task. In this presentation we will look at rigging fundamentals, some of the tools we use and how we apply them to tree work. Rigging systems can be as basic or as complicated as the mind can imagine. By understanding some core principles of physics and tree structure, we can choose a rigging system that is safe and efficient.
- 2:30p** Break & Refreshments
- 3:00p** **Critical Root Zone Therapy** | Daniel Miraval & Brianna White, *Emerald Tree Care LLC*
This demonstration will showcase the use of pneumatic soil tools in arboriculture, specifically the AirSpade. This diagnostic tool adds pneumatic soil excavation to the list of plant healthcare methods. From planting depth, to compacted soils, to girdling roots – a vast majority of a tree's stressors start below ground. By implementing critical root zone therapy by use of supersonic air technology, alleviating those stressors is the first step of tree longevity. Board Certified Master Arborist, Daniel Miraval, and Certified Arborist, Brianna White will demonstrate different uses of the AirSpade, including the excavation of a tree's flare and vertical mulching. This is an opportunity to see the exposed roots of a tree to understand what it looks like below ground. This will also serve as an opportunity to explore an alternative path to the traditional career of production work.
- 4:00p** **GIS & Inventory** | Nathan Paulus, *Davey Resource Group*, & Joe Hansen, *Village of Wilmette*
In order to properly manage a tree population, you have to know what is in it. A tree inventory is a common tool used by many tree managers to gather information on their tree population. This discussion will go over what a tree inventory is, how we conduct a tree inventory and the benefits of performing a tree inventory. To wrap up the discussion we will look at how a couple of local municipalities use their inventories and why they choose to perform a tree inventory.

Career Fair & Networking

COC Lunchroom | The Morton Arboretum

Refreshments & Food (Sponsored by Kramer Tree Specialists)

5:30 - 6:00p Career Fair & Networking
6:00 - 6:15p Welcome, Sponsors | Paul Filary
6:15 - 7:00p Careers in Arboriculture, Panel Discussion
7:00 - 7:30p Career Fair & Networking

career fair &
dinner sponsors



KRAMER TREE SPECIALISTS, INC.



Friday | October 18th

The Morton Arboretum | Gateway to Tree Science

illinois arborist association

**ARBORICULTURE
CAREERS**

demonstration event



Demonstration Events

Location: Gateway to Tree Science, The Morton Arboretum (Unless Otherwise Noted)

8:00a Green Infrastructure | Kris Bachtell & Michelle Catania, *The Morton Arboretum*

THIS DEMONSTRATION MEETS IN THE MAIN PARKING LOT (P1)

[This presentation description is coming soon.]

9:30a Abiotic & Biotic Field Diagnosis | Chelsi Abbott, *Davey Tree*, & Jake Miesbauer, *The Morton Arboretum*

The presentation will review and demonstrate the process of field diagnostics of abiotic (non-living) and biotic (living) issues. In addition, there will be support steps of the diagnostic process with live samples, surrounding plants and tools.

10:30a Break & Refreshments

11:00a Plant Healthcare Advancements | Dan O'Brien, *Banner Sales & Consulting*, & Brianna White, *Emerald Tree Care LLC*

The world of plant healthcare revolves around understanding trees, their health challenges, and the options involved in improving those challenges. What makes plant healthcare so dynamic is the various tools available in the 'Arborist Toolbox' to lessen the stressors, improve the health, and maintain the vigor of our urban trees. Let's talk about both the simple and complex challenges that trees face along with some of what tools are available to our sector.

12:00p Lunch (Provided!)

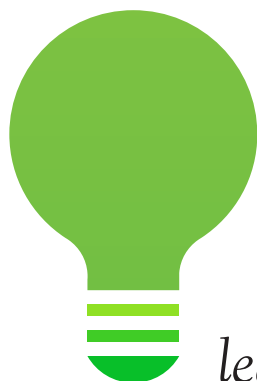
1:00p The Urban Tree's Environment | Michelle Catania & Jake Miesbauer, *The Morton Arboretum*

Tour the Gateway to Tree Science and see curated examples showcasing the proper selection, installation, and maintenance of trees in the urban landscape. We are undergoing a Gateway redevelopment aimed to bring more outreach and training opportunities to green industry professionals while aligning to ISA's best management practices. Our goal is to offer a space to educate on how to improve the health and longevity of trees in the built environment. With the support of the green industry, together we can achieve a greener, healthier, more beautiful world.

Event Wrap-Up

Location: Gateway to Tree Science, The Morton Arboretum

2:00p Event Debrief & Departure



learn



connect



grow



CHELSEI ABBOTT



KRIS BACHTELL



GREG BUTLER



MICHELLE CATANIA



PAUL FILARY



JOE HANSEN



JAKE MIESBAUER



DANIEL MIRAVAL



DAN O'BRIEN



NATHAN PAULUS



PHIL PROHASKA



BRIANNA WHITE

THE MORTON ARBORETUM ARBORIST STAFF

illinois arborist association
**ARBORICULTURE
CAREERS**
demonstration event

